



BACKstage

Technical Theatre for High Schools

Venue/Personnel Terminology (A-L)

Acting Area: Space in which performer moves in full view of audience

Actors' Equity Association: Labor union that represents actors, singers, dancers and stage managers in the professional theatre
Synonym: AEA, Equity

Aisle: Walkway through seating in an audience area

Alley Staging: Staging running the width of the hall with audience on two sides facing each other
Synonym: Corridor Stage, Traverse Stage

Amphitheatre: Outdoor performance space with stage and audience in a bowl-shaped seating
Synonym: Greek Theatre

Ante Pro: On the audience side of the proscenium
Synonym: AP

Apron: Area downstage of the proscenium arch at stage level
Synonym: Forestage

Arena Stage: Stage configuration where the audience surrounds the stage

Armorer: Specialist in charge of weapons as part of the props for a show
Synonym: Weapons

Artistic Director: Person responsible for the artistic (creative) vision of an organization

Assistant Lighting Designer: Person who works under the direction of the Lighting Designer
Synonym: ALD

Assistant Stage Manager: Responsible for duties as assigned by the Stage Manager. Typically, stationed backstage during performances
Synonym: ASM

Back of House: Stage support space not visible to the audience

Backstage: Areas in the venue used by the performers and production crews that are not accessible to the audience

Balcony: Upper levels of the seating above the main level
Synonym: Loge

Black Box: Flexible performance space with no fixed stage platform or audience seating
Synonym: Studio

Border: Short drapery hung horizontally to mask the overhead battens, lighting equipment and scenic elements
Synonym: Teaser

Break: Designated time out of work for rest
Synonym: Break Time, Coffee, Crew Break

Call: Announcement of the time and type of work that is to be done and by whom
Synonym: Work Hours

Call Board: Backstage bulletin board information about the production, crew, and venue are posted

Call Sheet: Document on which one finds the crew list and supervisors for each call for a crew

Calling a Show: Process of giving cues to the crew and performers. Typically performed by the Stage Manager
Synonym: Cue Calling

Cast: Performers in a production

Catwalk: Elevated walkway used to access equipment
Synonym: Cats

Center Line: Imaginary line through the center of the stage from upstage to downstage
Synonym: CL

Center Line Symbol: ⚡ with a vertical line of alternating long dashes and short dashes

Charge Painter: Head scenic painter; responsible for budget and crew

Choreographer: Person who creates and directs movement/dance of performers

Combat Captain: Person responsible for maintaining choreographed fight routines

Combat Choreographer: Person who creates and directs stage fight routines

Company Manager: Person responsible for administrative duties pertaining to performers and production personnel

Control Booth: Area where the theatrical control equipment and operators are located
Synonym: Booth, Electronic Beach, Production Booth

Cove Position: Front of house overhead position for lighting and staging support
Synonym: Beam Position

Crew: Workers assigned to a production or venue

Crossover: Backstage area used to cross from one side of the stage to the other out of view from the audience

Cue: 1.) Specific command in a production , usually given by the stage manager, that results in an action by performer or technician 2.) Specific command in a production that is identified and named that results in an action

Cue to Cue: Rehearsal consisting of running only the technical cues in sequence
Synonym: Dry Tech, Tech, Wet Tech

Cyclorama: Background, usually full-stage width or more, used as an upstage lighting surface

Dance Captain: Person responsible for maintaining choreography

Dark: When a venue is not open for a performance or performance related activity

Deck: Flooring, permanent or portable
Synonym: Floor

Director: Person responsible for all aspects and artistic vision of a production

Dress Rehearsal: Rehearsal of the complete production as it will be with an audience present
Synonym: Dress, Full Dress

Dry Tech: Running the show cue to cue without performers
Synonym: Tech

Facilities Manager: Person responsible for managing physical plant (buildings and systems)

Floor Plan: Drafted view of scenery or stage layout from an overhead perspective
Synonym: Ground Plan, Plan View

Fly Tower: Structure above the stage for the suspension and vertical movement of production elements
Synonym: Flies

Front of House: 1.) All spaces used by the audience; 2.) Technical aspects in the audience area
Synonym: FOH

Ghost Light: Single lamp in a safety cage on a floor stand to illuminate the stage when the theater is not in use
Synonym: Pass Through Light

Going Dark: Warning given when the stage is going to a blackout
Synonym: Going to Black

Gridiron: Over stage support structure consisting of regularly spaced members permanently affixed to the venue to support equipment
Synonym: Grid

Head Carpenter: Person responsible for directing all technical activities and crews working on the stage
Synonym: Crew Head, Foreman, Master Carpenter, Shop Foreman, Stage Crew Chief

Head Electrician: Person responsible for electrical crew for a production
Synonym: Master Electrician, ME

Head Flyman: Person responsible for the fly system crew

Head Rigger: Person responsible for the rigging crew

House Manager: Person responsible for the box office, concessions, ushers, and support for audience services
Synonym: Front of House Manager

International Alliance of Theatrical Stage Employees: Trade union representing stagehands, scenic artists and stage designers
Synonym: IA, IATSE

Leg: Narrow curtain hung vertically along the sides of a stage and parallel to the plaster line

Lighting Designer: Person who creates the lighting design for a production
Synonym: LD

Lighting Director: Person who stays with the show to maintain lighting design

Lighting Supervisor: Person who performs traditional duties of assistant lighting designer as well as coordinating stage electricians

Loading Dock: Area of the venue for bringing objects in to the facility, typically raised to allow easy access to trucks
Synonym: Dock

Loading Door: Large access door into the performance space used to move equipment and materials in and out of the space
Synonym: Bull Door, Elephant Door

BACKstage

Technical Theatre for High Schools

Venue/Personnel Terminology (M-U)

Mezzanine: Balcony level that is immediately above the orchestra level


Music Director: Person who selects the music and leads the rehearsal and performance of musicians
Synonym: Conductor, Maestro

Off Stage: Stage area that is not visible to the audience

Orchestra Pit: Sunken area immediately in front of the stage intended to accommodate musicians
Synonym: Pit

Patron: Person who attends and supports an event

Pit Cover: Removable flooring over the orchestra pit

Plaster Line:  Imaginary line across the stage between the proscenium opening and stage corners
Synonym: Proscenium Line

Producer: Person with ultimate control for an entertainment event

Production Electrician: Person who assembles and installs the lighting equipment of a production, and supervises the electrical crew
Synonym: Lighting Crew Chief

Production Manager: Person responsible for the technical preparations including scheduling, budgeting, and overall supervision of the production personnel
Synonym: PM

Production Stage Manager: Person who coordinates activities of a stage management team
Synonym: PSM

Prompter: Person or device that follows the script of a production to help the performer with their lines
Synonym: Teleprompter

Properties Artisan: Craftsperson who constructs props and modifies them during rehearsals

Properties Designer: Person who creates the design for production props

Properties Master: Person responsible for all production props during the run of a show

Proscenium: End stage configuration where the audience area is separated from the stage

Proscenium Arch: Frame that separates the stage from the audience in a proscenium theatre

Proscenium Theatre: Theatre configuration where the audience views the production through a large opening in the wall between the audience and the stage spaces

Running Crew: Persons involved in doing the technical work during a performance

Scenic Designer: Person who creates the design for the stage scenic elements

Scrim: Loosely woven material that is generally opaque when light streaks across the front, but transparent if a scene is lit behind it

Sightlines: Boundary to what an audience can see on stage, separating onstage from offstage

Sound Crew Chief: Person in charge of the audio crew
Synonym: A-1, Sound Master

Sound Designer: Person who assembles and/or creates the sound for a production

Stage Manager: Person managing the rehearsal process and calling the cues during the performance
Synonym: SM

Stagehand: Person who moves scenic elements on stage
Synonym: Tech, Techie

Strike: Removal of an element from a production or the entire production from the venue
Synonym: Load-out, Put-out, Wrap

Tab Curtain: Leg running perpendicular to the plaster line

Technical Director: Person who coordinates all technical aspects of a production and/or facility
Synonym: TD, Technical Production Director

Technical Rehearsal: Rehearsal with the technical elements added
Synonym: Tech, Tech Rehearsal

Tension Wire Grid: System of interwoven wire rope that serves as a working platform
Synonym: Cable Grid, Izenour Grid, Sky Deck®, Tension Grid, Wire Grid

Thrust Stage: Stage configuration where the stage extends into the house with audience on three sides

Trap: Removable portion of stage floor

Trap Room: Space below the stage accessible through stage floor openings

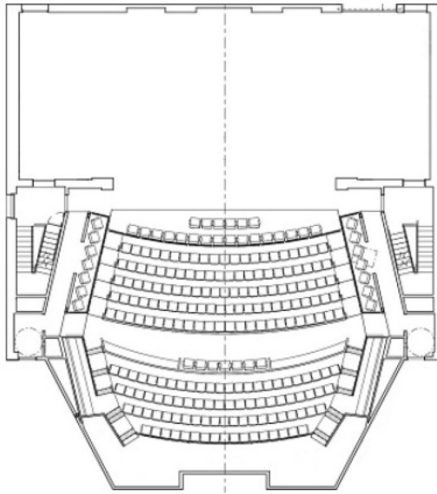
Tunnel: Access pathway to seating areas, stage or playing field

Synonym: Vomitorium, Vomitory, Voms

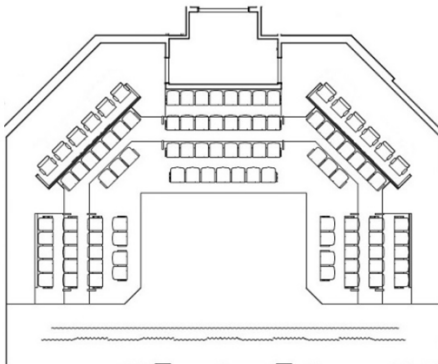
Ushers: Persons who take tickets, distribute programs, and assist audience members in finding seats

Theatre Types and Lines

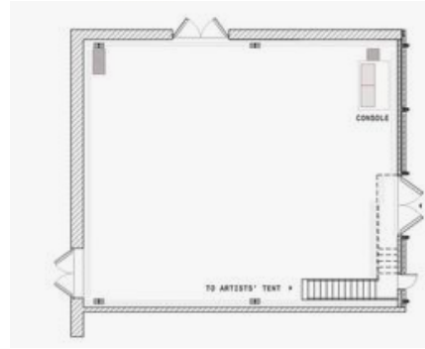
Proscenium



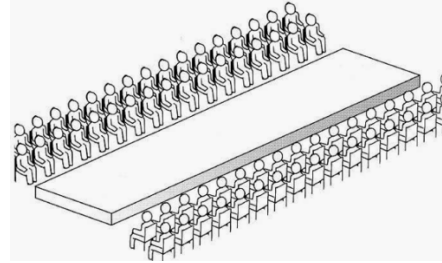
Thrust



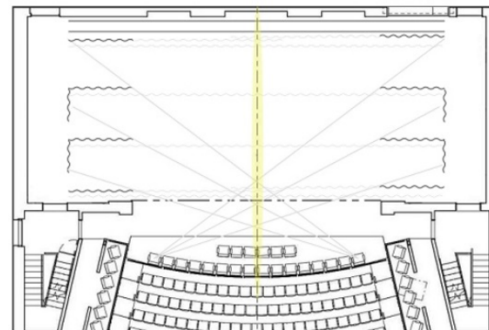
Black Box



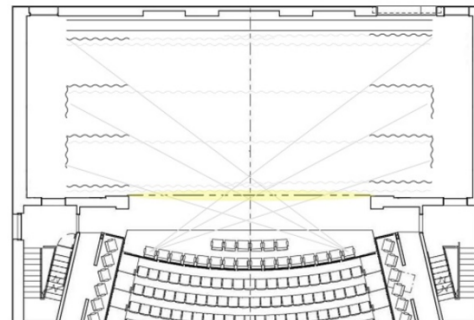
Alley



Center Line



Plaster Line



Sightline

